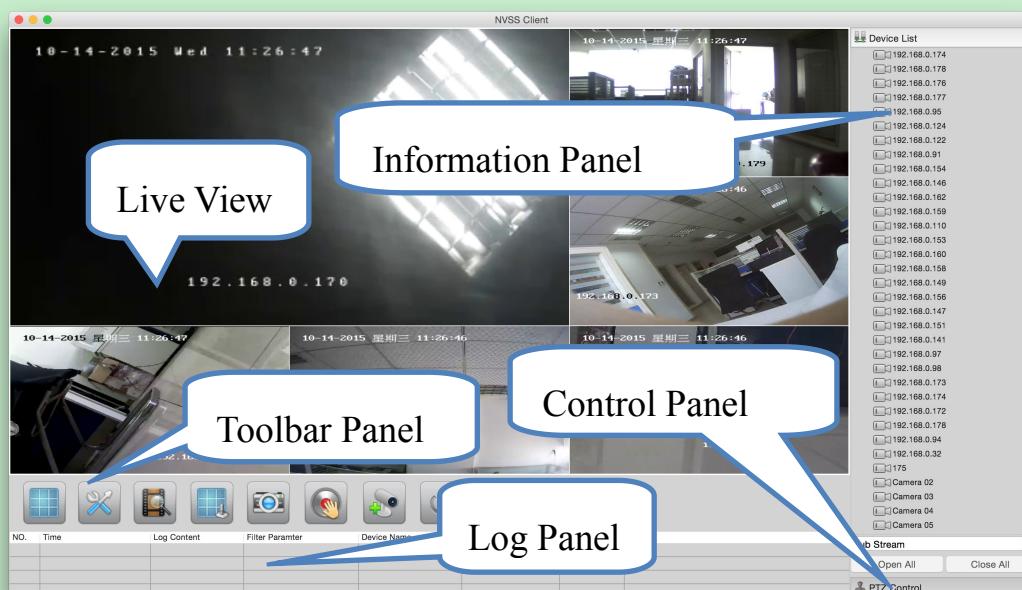

Content

Chapter1 Main Interface.....	2
1.1 Device Management.....	2
1.1.1 Add Device.....	2
1.1.2 Modify Device.....	3
1.1.3 Delete Device.....	4
1.2 Live View and Screen Menu.....	4
1.2.1 Live View.....	4
1.2.2 Screen Menu.....	4
1.3 Toolbar Panel.....	11
1.4 Information and Control Panel.....	14
1.4.1 Sever List.....	14
1.4.2 PTZ Control.....	16
1.5 Log Panel.....	18
Chapter2 Playback.....	19
2.1 Select Device and Date.....	19
2.2 Select Record Type.....	20
2.3 Playback Operation.....	21

Chapter1 Main Interface




Pic1

The main interface contains five parts: Information Panel, Live View, Toolbar Panel, Log Panel, Control Panel. Shown as pic1.

1.1 Device Management

The main function of the CMS Client is to connect the network cameras and record the video. So, before you get a live view or record of the video, you should add the network cameras to the connection list of the device first.

There are two ways to go into the **device management** to add IPC: select the

Add Device of context menu; click the button  in toolbar panel.

The **Device Management** include add IP devices to CMS Client, modify or delete IP devices from CMS Client. For resource limitation, you can add max 64 channel 1080P(1920*1080) IP cameras, including DVS / DVR and NVR.

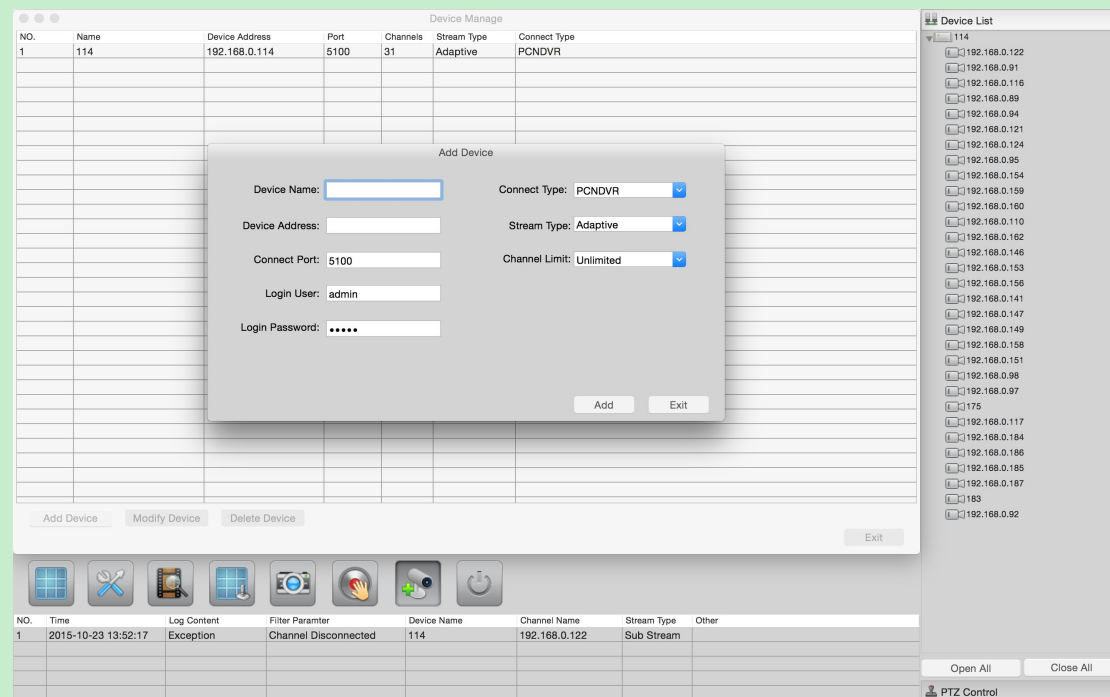
Now our CMS Client supports two types of IP products: PCNDVR and P2P Connect.

1.1.1 Add Device

1. Add Device

Press  button, it will pop up a sub window, showed as pic1-1-1,

you can add an IP Camera manually:



Pic1-1-1

【Device Name】 Set a name for the new IP camera, the server name you set will be showed as camera name at the preview channel.

【Device's Type】 Select the corresponding type for the IP camera. Now our CMS Client supports two types of IP products: PCNDVR and P2P Connect.

【IP Address】 Input the IP address of the camera, it is an IP address or IP alias of an IP camera which is connected through DNS Server.

【Stream Type】 Select Main-stream, Sub-stream or Adaptive for the device. If you want to use the record sub stream function in the IP device, you should select the data stream type as Adaptive Stream.

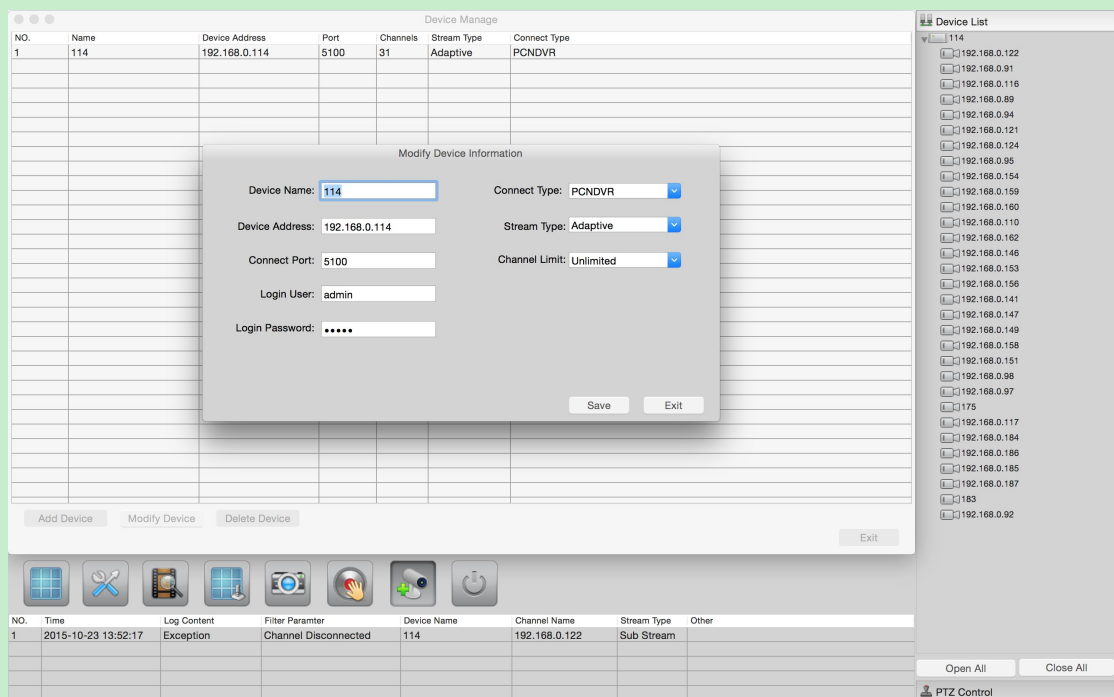
【Connect Port】 Set the port through which connects to IP Camera.

【Channel Limit】 Users can limit channel number and select the limit number of channels, the maximum limit of 64.

【Login User/Login Password】 When the user want to visit IP Camera and the server has used the function of rights management, login user ID and password will be checked.

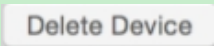
1.1.2 Modify Device

Press **Modify Device** button to modify IP camera information, the interface is the same as **Add Camera**, showed as pic1-1-2.



Pic1-1-2

1.1.3 Delete Device

Press  button to delete a connected server.

1.2 Live View and Screen Menu

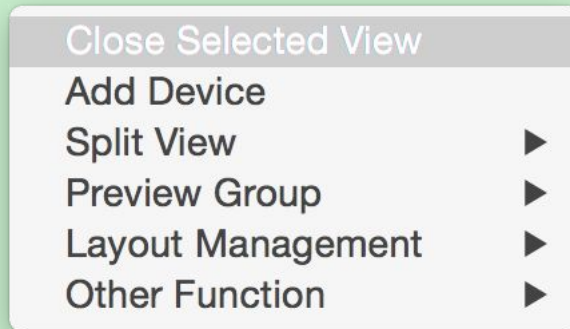
1.2.1 Live View

Live view shows the real-time video getting from the cameras. Users can setup the display split mode & camera in each window in the **Preview Group** which will be introduced in the **Screen Menu**.

You can drag the camera in server list to any live view window in monitor to preview its video. You also can click on the picture to switch to the main stream display.

1.2.2 Screen Menu

User can Single-Right-Click image area to pop up the screen menu, showed as pic1-2-1:



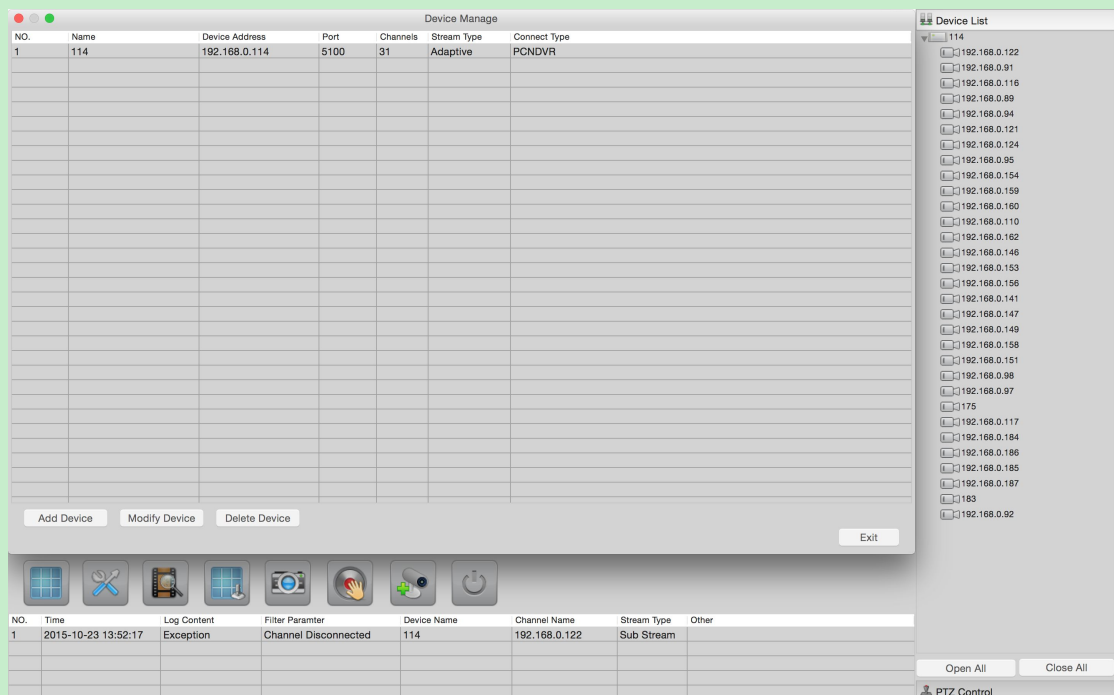
Pic1-2-1

1. Close Selected View

Users can choose the current view and click Close Selected View in the pop-up menu, the monitor screen will be closed.

2. Add Device

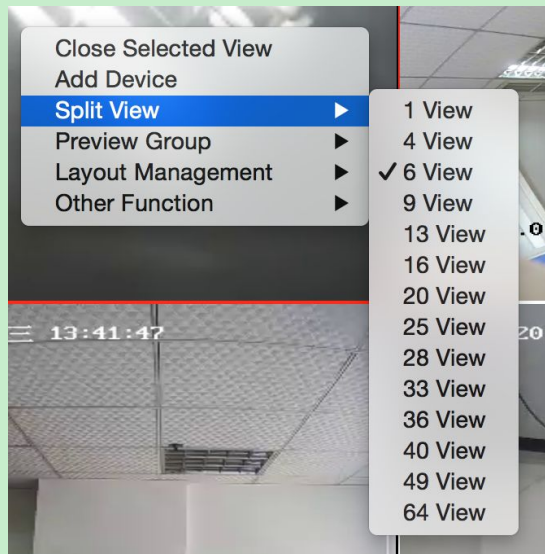
Users can Single-Right-Click image area to pop up the screen menu, select Add Device. Shown as pic1-2-2.



Pic1-2-2

3. Split View

Move your mouse to highlight Split View, it will pop up the sub menu, showed as pic1-2-3, you can select the window split mode in the pop-up menu.



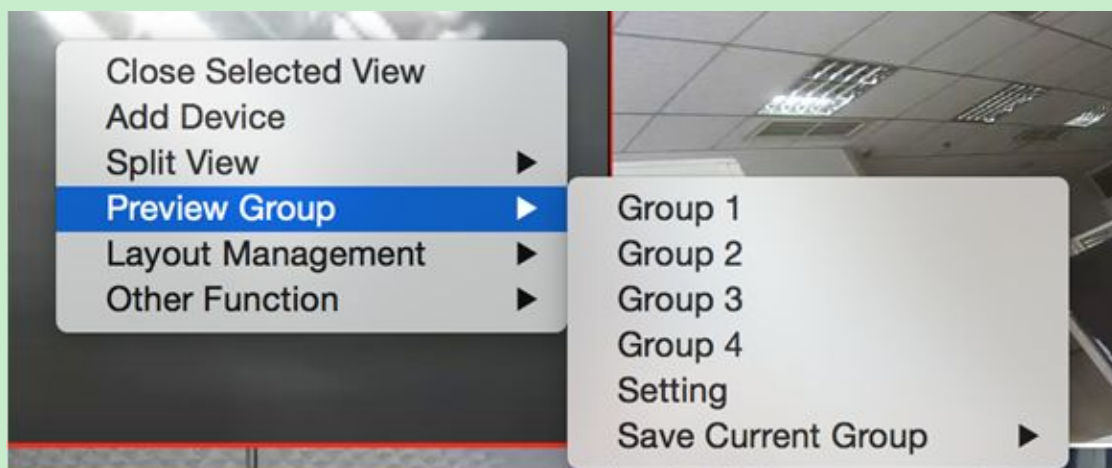
Pic1-2-3

4. Preview Group

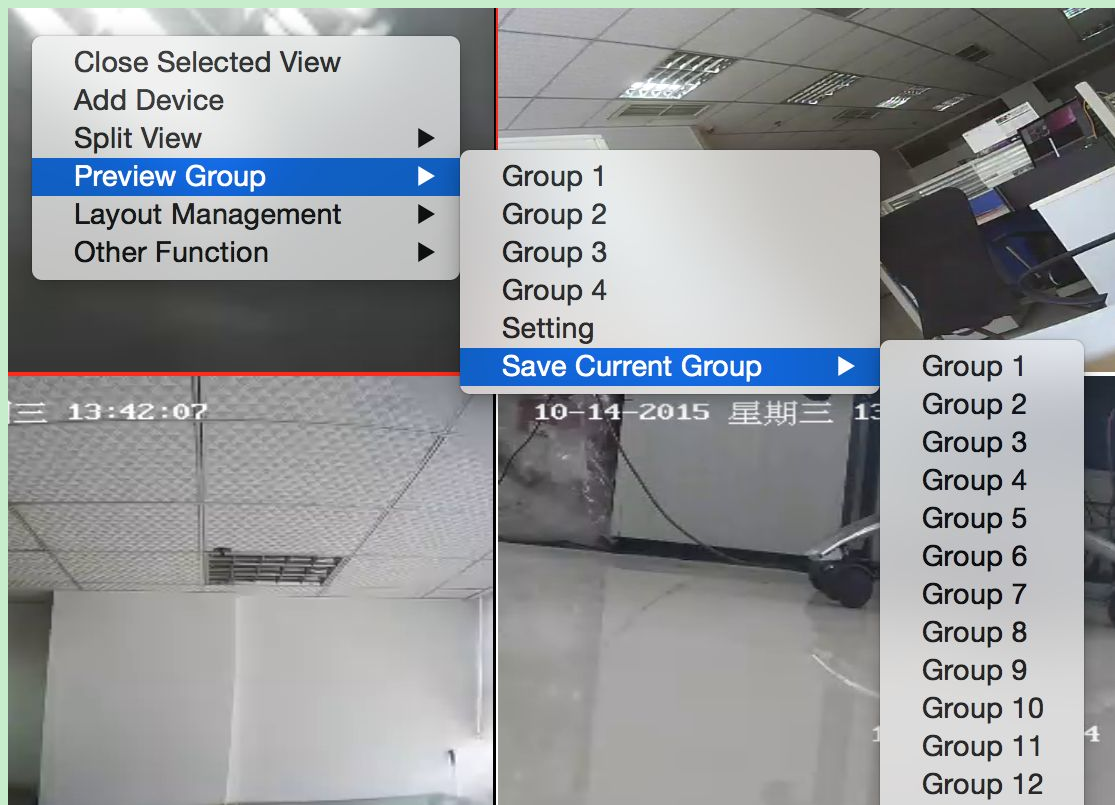
a. Group view

You can single click **Preview Group**, It will pop up the sub menu, showed as pic1-2-4(a), you can step into the **Setting** to set and save the preview group, and you can also save the current preview group of monitor to any group by clicking **Save Current Group**.

After you set and saved the preview group, you can call any preview group by single clicking the group name as pic1-2-4(b) shown.



Pic1-2-4(a)



Pic1-2-4(b)

b. Setting

You can step in the **Setting** sub window, showed as pic1-2-4(c).

Setting --It will list all the servers & cameras connected to the software, and when your mouse stop above the camera name, you will see the detail information of the camera. You can drag any cameras in device list to any display window. If you want to cancel the display of one camera in one window, you can double click it to remove.

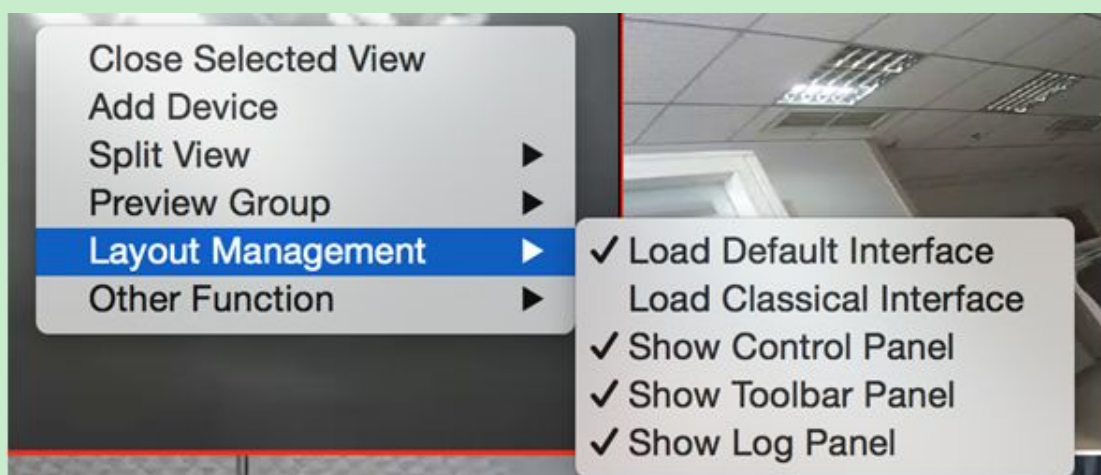
The screenshot shows the CMS Client configuration window. At the top, there are controls for 'Select Group' (set to Group 1), 'Group Name' (Group 1), 'Window View' (6 View), and a 'Launch Display Group' checkbox. On the left is a 'Device List' with IP addresses and camera names. The main area contains a table of device streams with columns for Device Name, Channel Name, and Stream Type. Below the table are settings for 'Interval' (5 S) and 'Launch Display Group'. At the bottom, there are 'Save' and 'Cancel' buttons.

Device Name	Channel Name	Stream Type
234	192.168.0.91	Sub Stream
234	192.168.0.146	Sub Stream
234	192.168.0.94	Main Stream

Pic1-2-4(c)

- The Select Stream Type can be selected between “Main Stream” and “Sub Stream”.
- You can select a group from the drop-down list to setup, support maximum 16 groups.
- You can also define the group's name and partitions.
- Check the box of any preview group, then the software will display this group automatically when the CMS Client startup next time.
- Users can drag several cameras into the same window to do sequence, and you can set the display interval as 5, 10, 15 and 20 seconds etc. from the drop-down list.

5. Layout Management



Pic1-2-5

You can manage the layout in **Layout Management** setting.

Load the Default Interface: Default interface is showed as pic1;

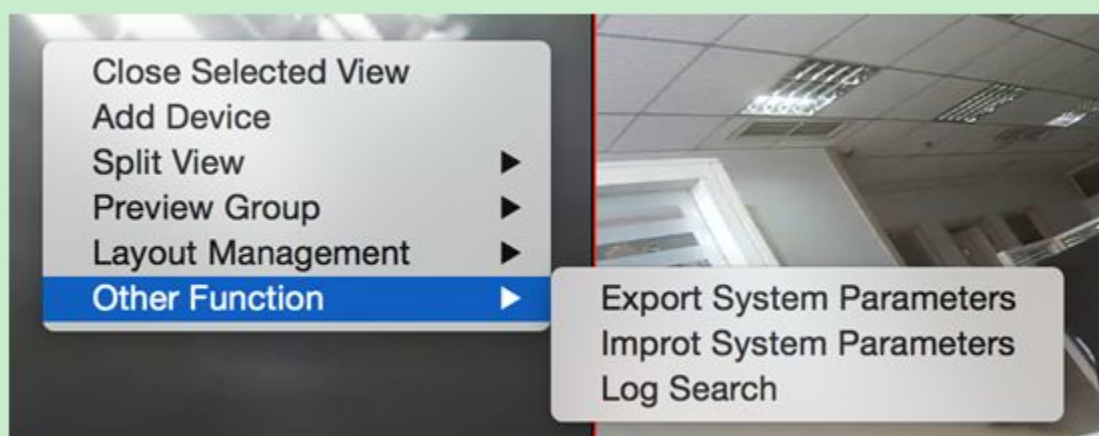
Load the Classical Interface: Classical interface only shows video in full screen mode;

Show Control Panel: You can check (uncheck) to display (hide) the control panel;

Show Toolbar Panel: You can check (uncheck) to display (hide) the toolbar panel;

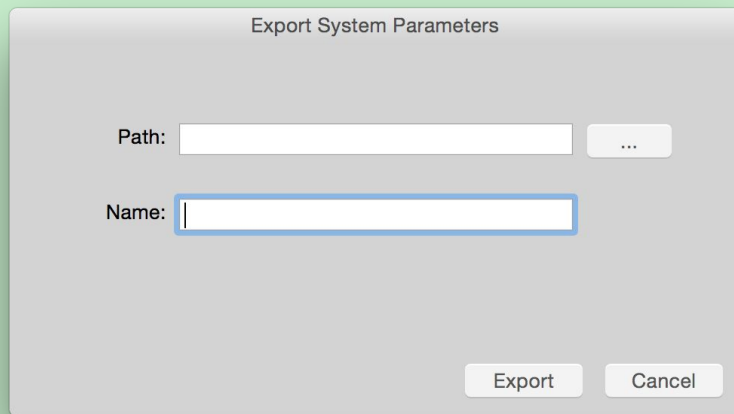
Show Log Panel: You can check (uncheck) to display (hide) the log panel.

6. Others Function



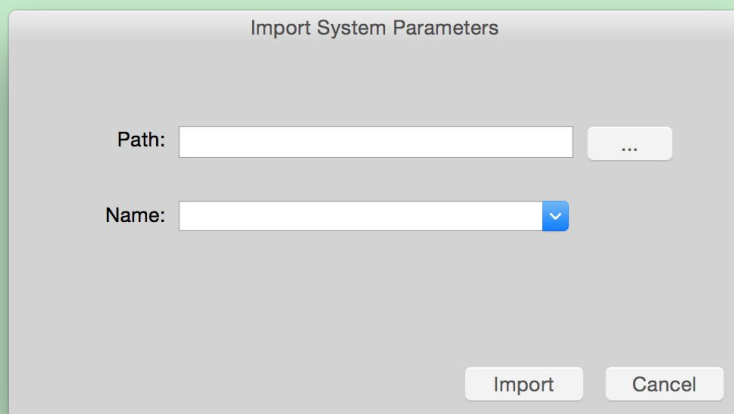
Pic1-2-6(a)

Export system parameters: It will pop up the Export System Parameters shown as the pic1-2-6(a). Just please input the file name and click the button Export, the parameters of the system has been exported to the selected path.



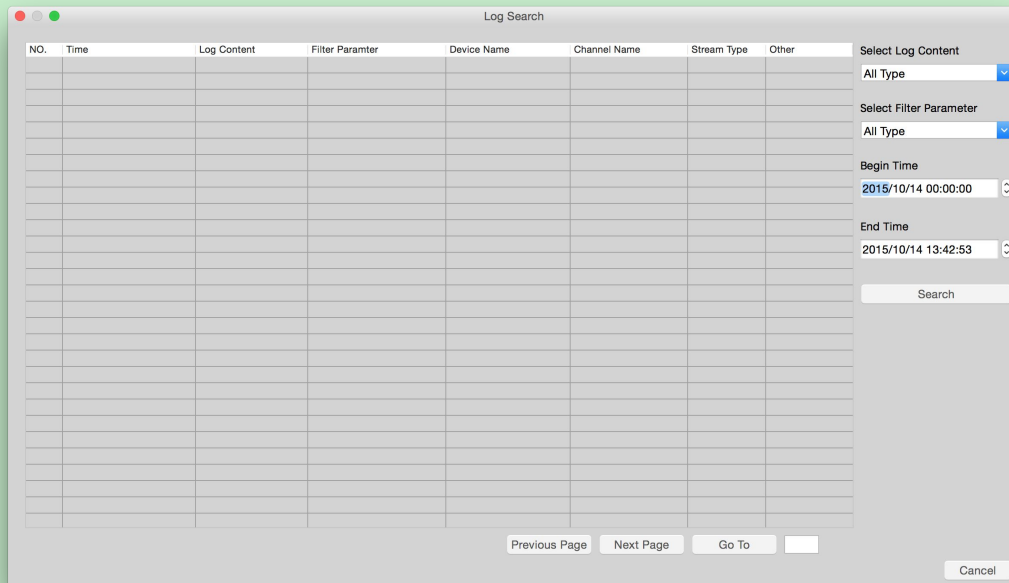
Pic1-2-6(b)

Import system parameters: It will pop up the Import System Parameters interface as shown blow. Just select the file you want to import and click the button Import, you can import the parameters what you want.



Pic1-2-6(c)

Log Search: It will pop up the Log Search sub menu, showed as pic1-2-6(d). Firstly, you can set the Begin Time and End Time to determine a time range. And there are two log contents: Local Operation and Exception. You can filter the log by the two contents and its filter parameter.




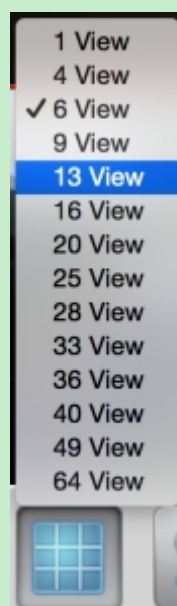
Pic1-2-6(d)

1.3 Toolbar Panel

■ Split view



Press  button to set the window's partition mode of the main screen. There are many types of partitions, showed as pic1-3-1:

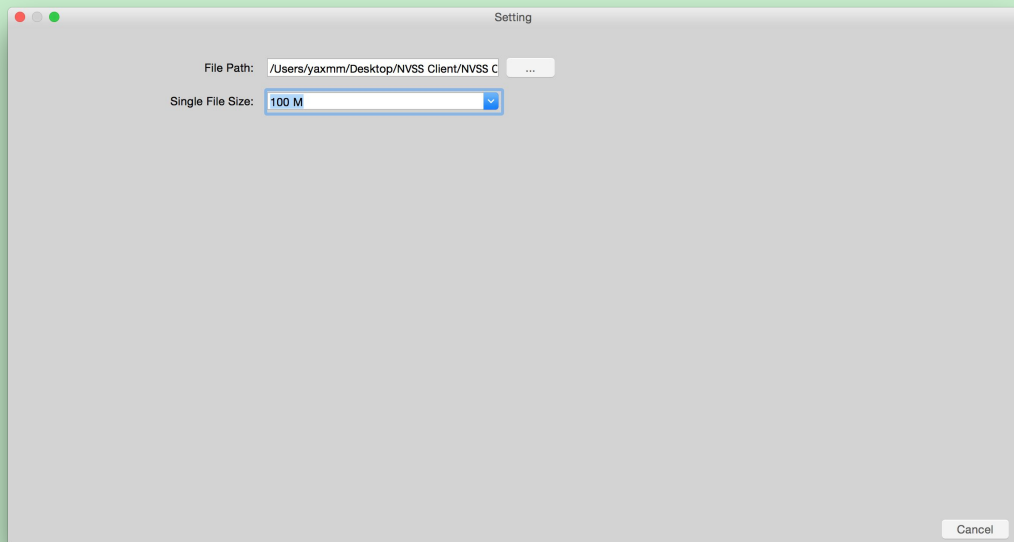


Pic1-3-1

■ System Setting



Press button to enter the **System Setting** window, showed as pic1-3-2



Pic1-3-2

■ Playback

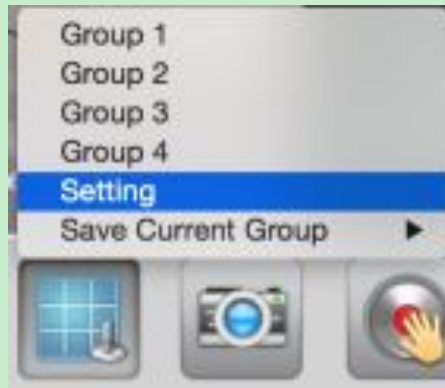


Press button to enter **Playback** sub menu to search local video/audio data. You can get the detailed information form **chapter2 Palyback**.

■ Group View&Setting



Press button to enter **Setting** to set preview group; choose the group which you want to view; and save the current view in monitor 1 to any preview group. When you press this button, it will pop up a sub menu, showed as pic1-3-3.

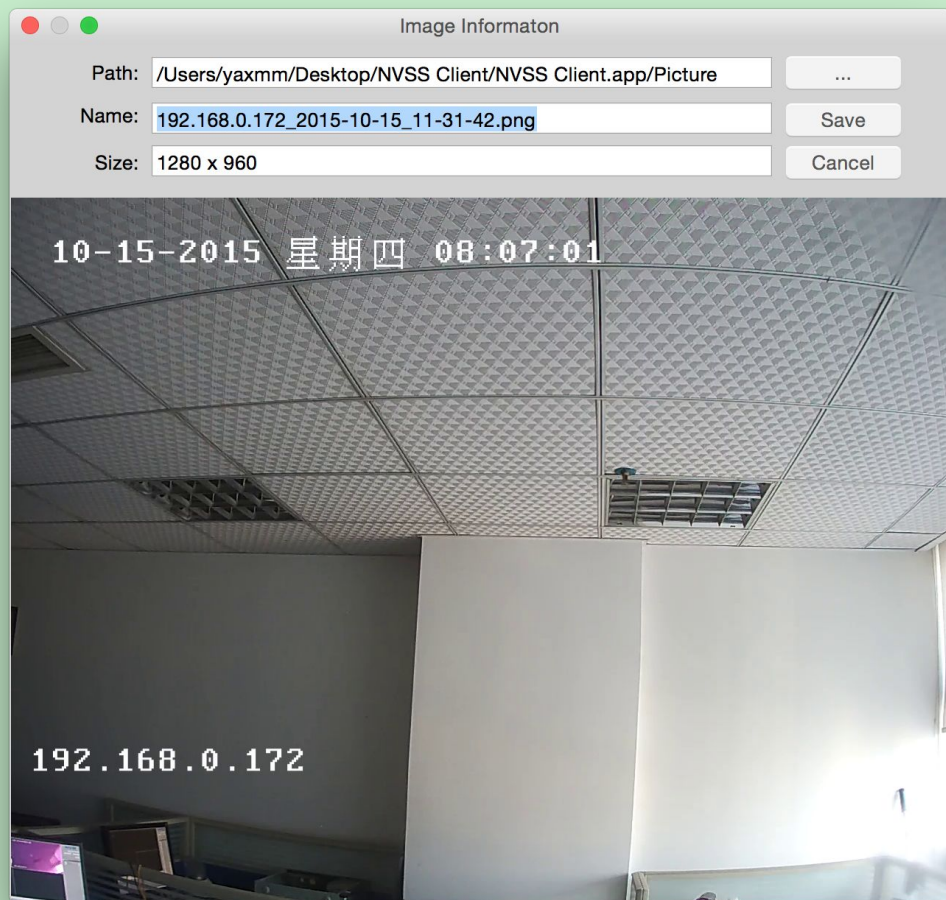


Pic1-3-3

■ Capture



Press button to grab a picture of a selected camera to the path, showed as pic1-3-4. you can view and download the capture picture in the capture picture and view of playback.



Note:

If the size of all the captured pictures beyond 2G, it would delete about half of them to save new one.

And you'd better modify the path for need.

■ **Manual Record**



Press button to record manually and press it again to stop manual recording for all cameras.

■ **Device management**



Press button to enter **Device Management** sub window.

■ **Power**

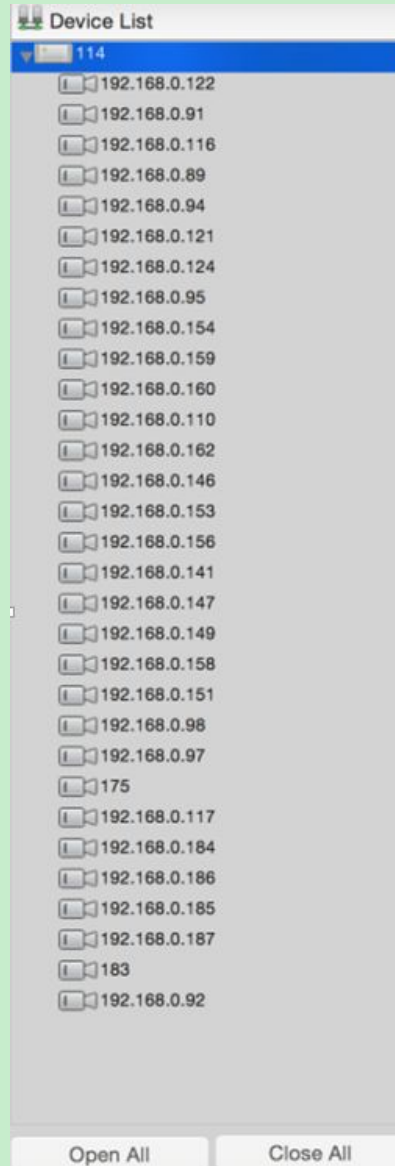


Press button to shutdown this software.

1.4 Information and Control Panel

1.4.1 Sever List

All the connected IP devices will be showed in the Sever List, showed as pic1-4-1. Users can get the detailed connection information when the mouse stops above the device flag.



Pic1-4-1

You can also know the connection and recording status about the server from its server and recording flag.

Server status:



--The IPC connected successfully;



--The IPC connected failed;



--The NVR/DVR connected successfully;



--The NVR/DVR connected failed.

Users can preview any video of the server list by dragging the camera to any live view window.

Open All

-- you can open the all connected cameras' sub stream by clicking this button.

Close All

-- you can close the all preview camera by clicking this

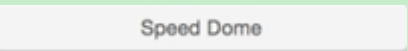
button.

1.4.2 PTZ Control



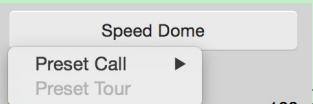
Pic1-4-2

The detailed function of each button:



-- Select the camera and press this button, it will

pop up this menu



for you to call a preset or tour group of the

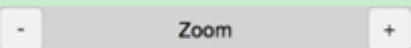
selected camera.

Note:

Only when you selected the video is dragged to the live view directly from the **Server List**, you can control the PTZ in the main interface; video set in preview group can't be controlled.



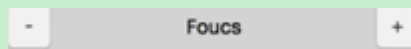
-- Users can drag the slider bar to adjust the speed of PTZ. Its range is from 1 to 255, the bigger number the faster speed.



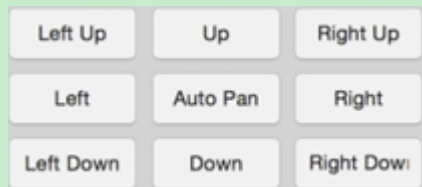
-- Zoom function of the PTZ camera control.



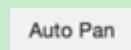
-- Overrides the PTZ cameras auto-iris and brighten or darken the image.



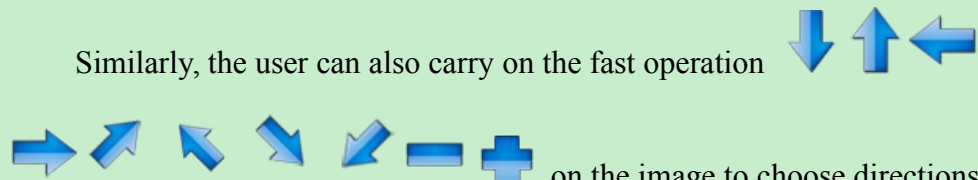
-- Auto-focus setup of the PTZ camera overrides, adjusted to focus the image.

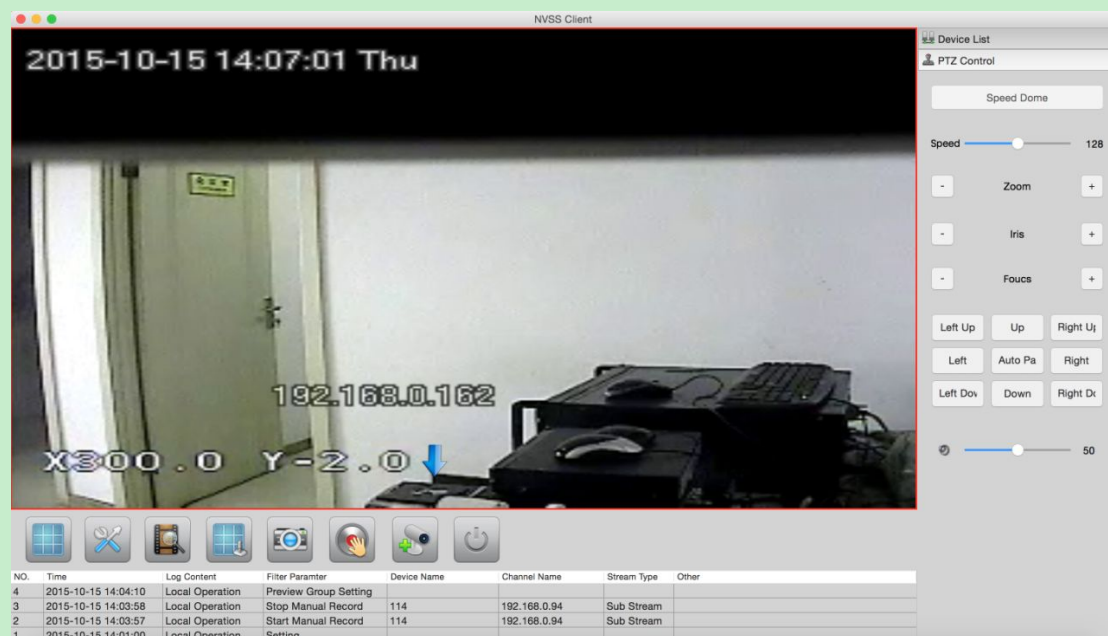


-- you can move up, down, left, right as well as other directions by pressing and holding these buttons.



-- Users can press this button to start the selected PTZ camera to do an automatic tour of 360, but for speed dome, many PTZ factorizes forbid this command.

Similarly, the user can also carry on the fast operation  on the image to choose directions. You should choose a image interface firstly. showed as pic1-4-3.



Pic1-4-3

1.5 Log Panel

NO.	Time	Log Content	Filter Paramter	Device Name	Channel Name	Stream Type	Other
2	2015-10-14 13:40:10	Local Operation	Add Device	234			
1	2015-10-14 12:05:54	Local Operation	Setting				

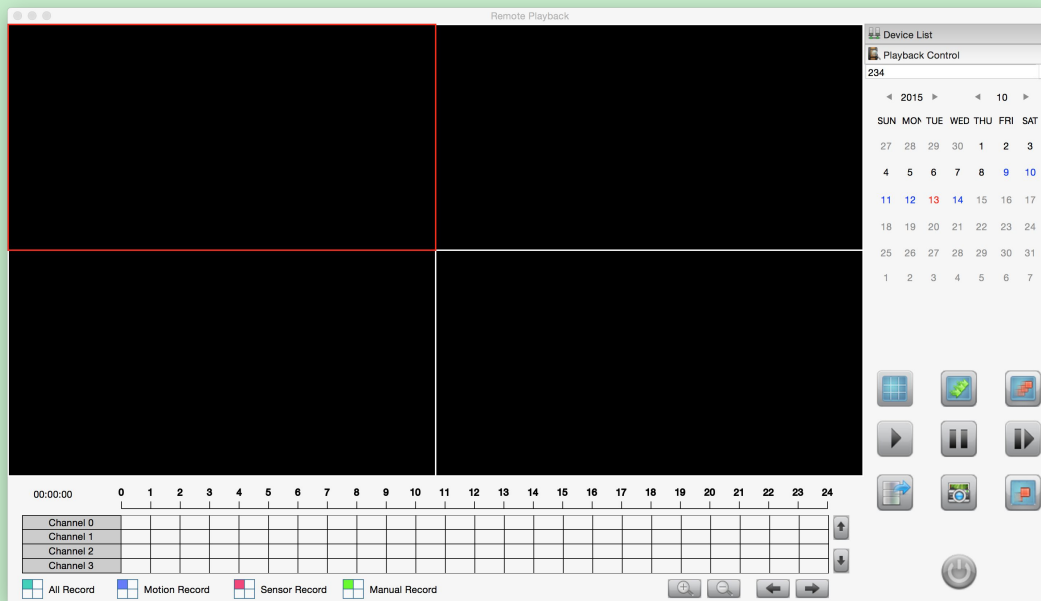
Pic1-5

All the real-time log information will be displayed in the log panel. showed as pic1-5. Users can search all logs in Log search.

Chapter2 Playback

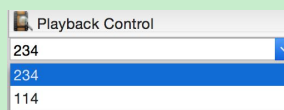


When you click the playback button, it will pop up the playback interface, showed as pic4. The default split view is four window views.



Pic2

2.1 Select Device and Date



Before you open the videos, Firstly, select one device to playback its data. Secondly, select the date, you can select the year, month and day which you want to search. The blue days means it has records, the red day means it has be selected. showed as pic2-1-1. Users can select the date which they want to do playback.



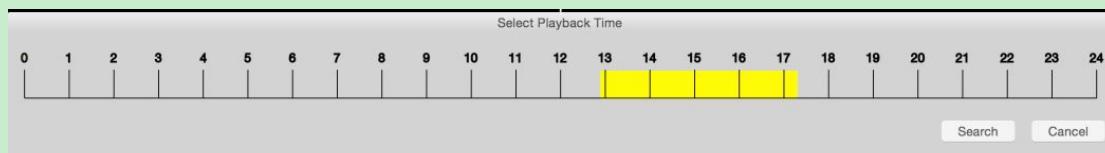
Pic2-1-1

Click the ◀ and ▶ to change month and year to search the data which you want.

In the process of playback, the first step is to select the date you want to playback, when they are selected, it will pop up the dialog box to select playback time, shown as pic2-1-2 . You can just select any period to playback by dragging the mouse; double click to select the whole day; right-click to cancel the selected period.

The advantage of this feature displays in three aspects:

- It can reduce the search time
- It can be more accurate positioning
- When there are large amounts of the video data, it can reduce the possibility of packer loss caused by the search.

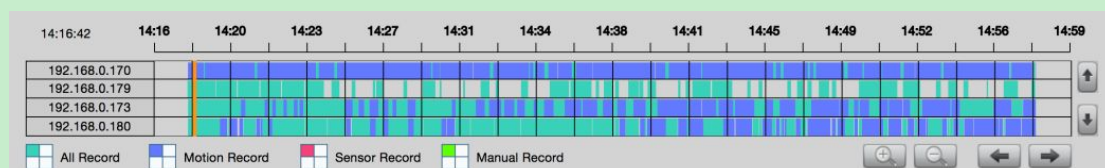


Pic2-1-2

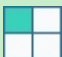

Note:

It would spend about 300s to search the whole day's video data when the total recording video data stream is about 300M/s.

2.2 Select Record Type

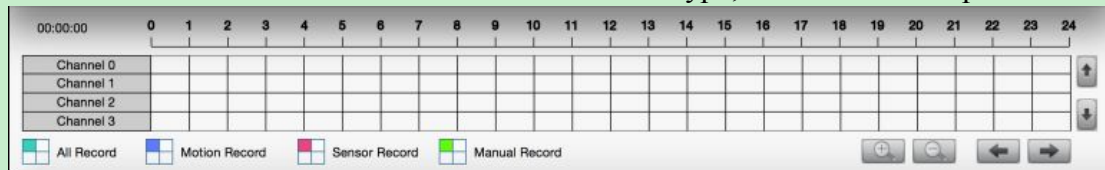


Pic2-2-1

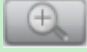

Press the icon , you can check all records, press the  icon when you



only want to playback motion recording, other record will be filtered. Sensor, Manual buttons are the same.



If there is no record data of the selected record type, it will show like pic2-2-2.



Pic2-2-2

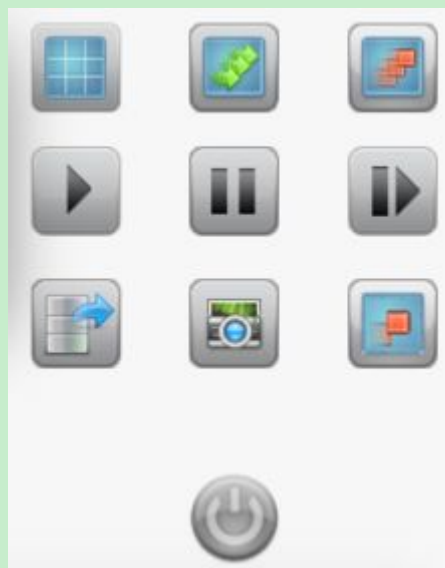
Press the  button, you can zoom in the time bar, and press the  button to zoom out. Users also can scroll the mouse to zoom in / out the time bar.

After zoom in the time bar, press the  button you can check the previous period records, and press the  button you can check the next period records.

Press  button or  button to view the record data of other cameras.

2.3 Playback Operation

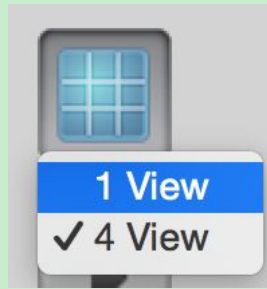
The bottom right of the playback interface is the operation panel. showed as pic3-3-1.



Pic2-3-1



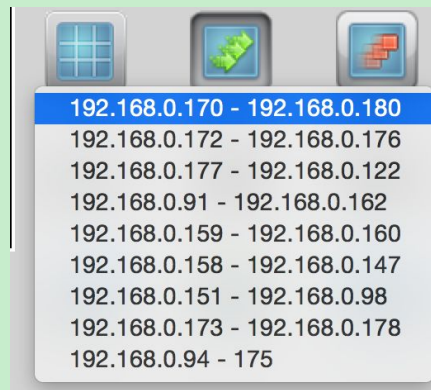
--Press this button to select split view. Showed as pic2-3-2;



Pic2-3-2



-- Press this button to select channels to playback. Showed as pic2-3-3;



Pic2-3-3



-- Press this button to close all cameras;



-- Press this button to play;



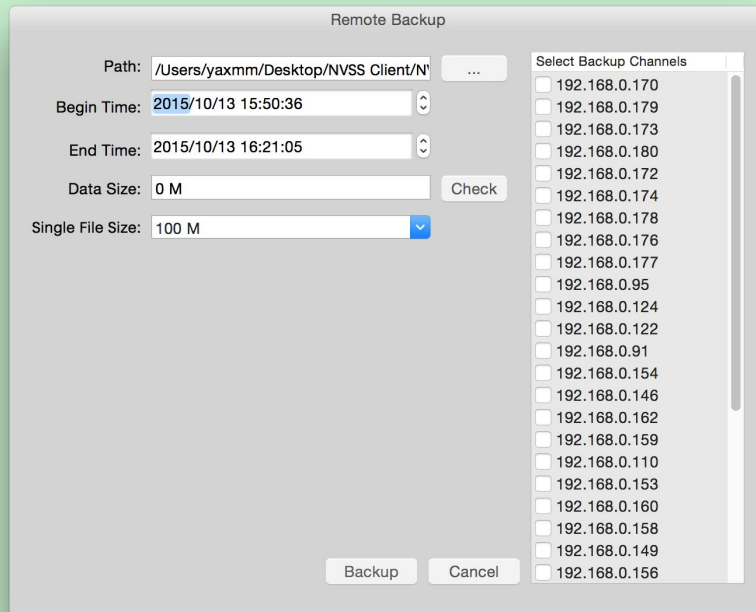
-- Press this button to pause;



-- Press this button to play next frame;



-- Press this button to export video analysis to the path. showed as pic2-3-4;



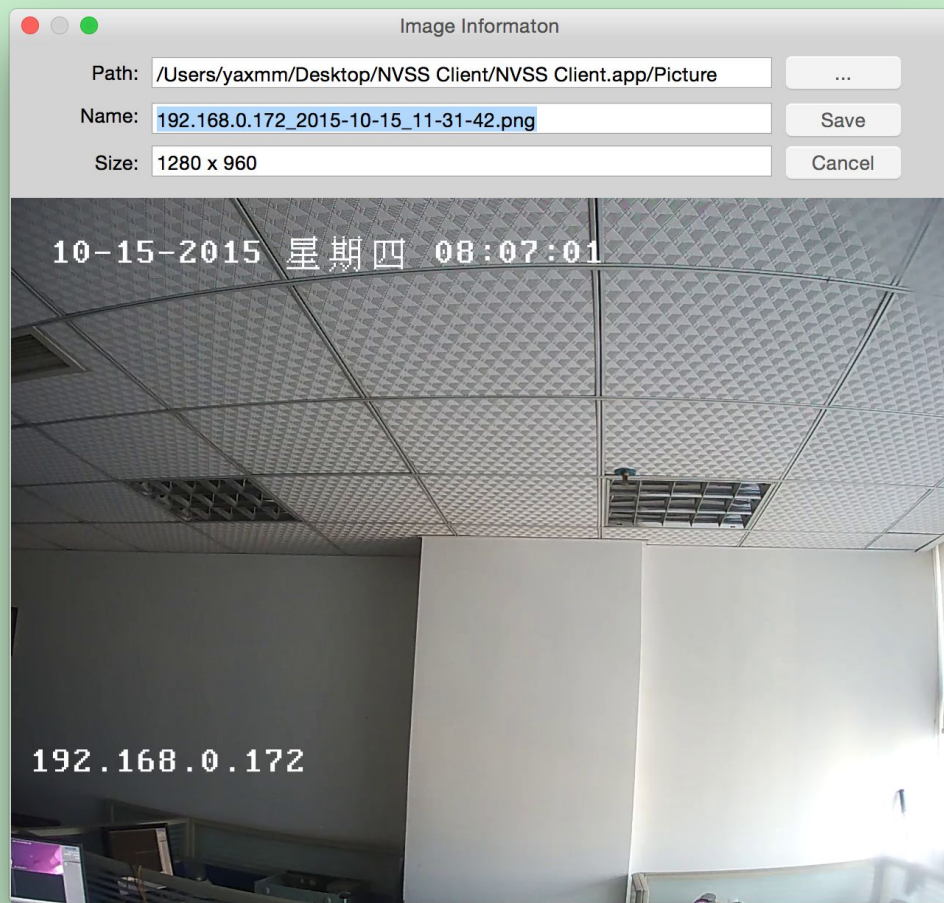
Pic2-3-4



--Press this button to grab a picture, when a picture is grabbed, there will be a dialog pop up to ask for file name and you can modify the path too. showed as pic2-3-5;

Note:

If you want to play manual video or remote backup video with QuickTime player, you need to install QuickTime player 7 or above version. Because the backup is Avi format, you need to download a plug-in for Player QuickTime to support the Avi format. When we tested, the plug-in is Perian_1.2.3.dmg, the official website is "<http://perian.org/>", you can also download other plug-ins too. And remember to restart Player QuickTime after installation.



Pic2-3-5



--Press this button to exit playback;